

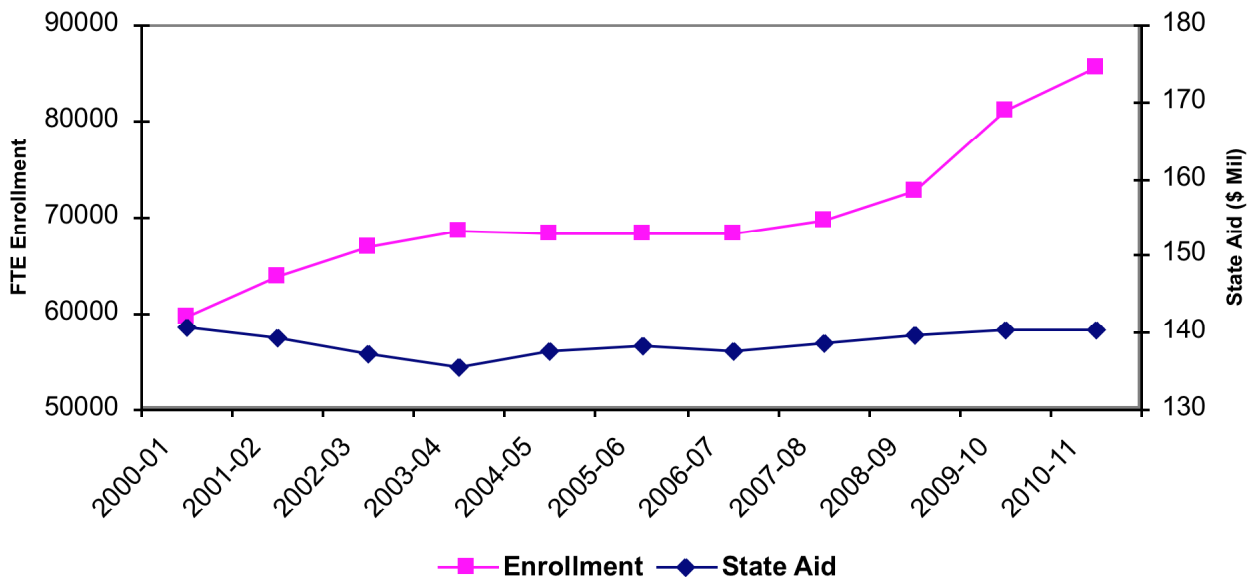


September, 2010

## Booming Enrollment Erodes Per-Student State Funding at Wisconsin Technical Colleges

Wisconsin technical colleges will enroll a record number of students again this year while state support to the colleges remains stagnant. This results in a steady erosion of state funding per student. To illustrate this trend, the chart below compares technical college enrollment (pink line) with state-level funding (blue line).

State Aid Support and Enrollment - Wisconsin Technical Colleges

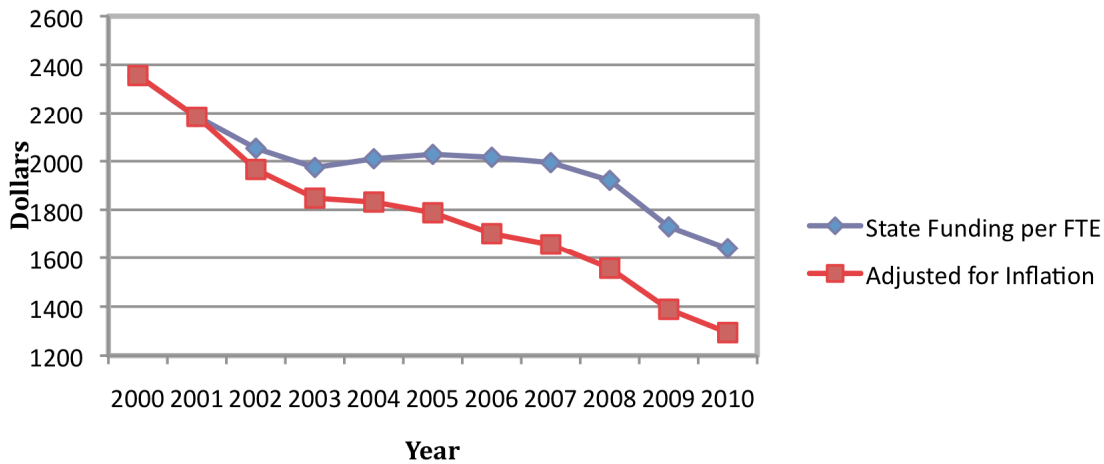


Enrollment is shown on an “FTE” basis. One FTE equals a fixed unit of 30 credits over a year. More than 400,000 individuals will enroll in credit-based courses statewide this year to generate these FTEs. Enrollment for 2010-11 is estimated based on Fall, 2010, enrollment trends to date. “State aid” includes total state support; both general and categorical aid to technical colleges.

Technical colleges are funded primarily by local property taxes, student tuition and state aid. Stagnant state support combined with dramatic enrollment increases result in a

significant erosion of state support per student. This places acute pressure on property tax levies and tuition rates.

### State Funding per Wisconsin Technical College Student – Actual and as Affected by Inflation



In actual dollars, total state aid per technical college student has fallen from \$2,356 in 2000 to \$1,730 in 2009, and to just \$1,640 for 2010 (through August). This represents a 30% decline in actual dollar terms over the past decade.

Adjusted for inflation, state support per FTE has dropped to just \$1,294 through August, 2010, a 45% erosion in state support per student over the decade.

Thousands of new students enrolling in Wisconsin technical colleges will fuel Wisconsin's economic recovery and, in turn, improve state revenues and the state's overall budget health. While the state continues to face serious budgetary challenges, investment in technical colleges should be a top priority. New state investment in technical colleges promotes job growth, fosters economic recovery, and reduces acute pressure on local property tax levy and tuition increases.

For more information, contact Paul Gabriel, Wisconsin Technical College District Boards Association, 608 266-9430, [pgabriel@districtboards.org](mailto:pgabriel@districtboards.org).